

New planting of trees flowering kind to side of driveway

Signboard

New picket gates

Walkway in timber decking and spindles stained dark brown

Exterior cladding in feather edge boarding and stained black

White UPVC windows

Roofing in grey profiled steel tile pattern sheeting to match Lighthouse roofs

Level of road

Gate

South Elevation

Road

Fence

French drain

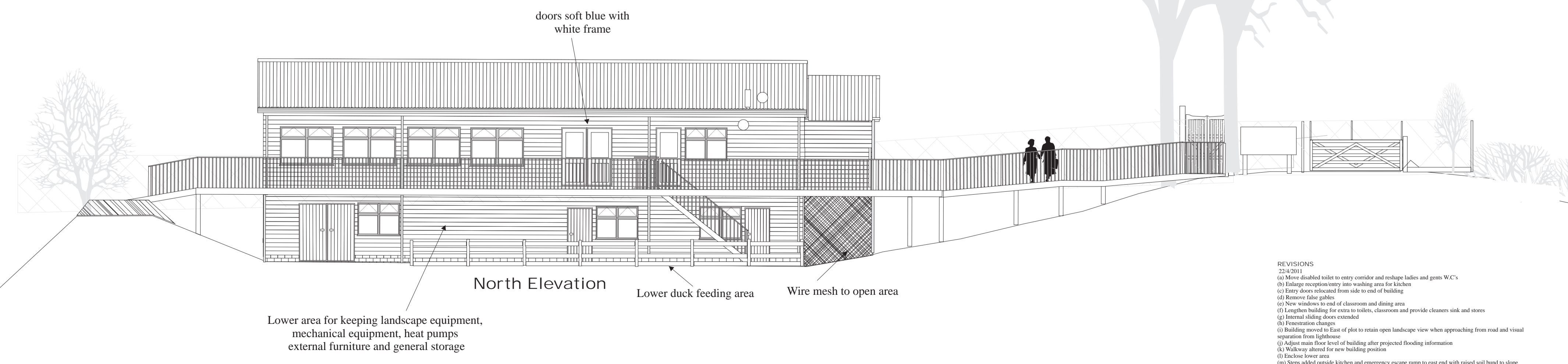
door soft blue with white frame

Ground Level

West Elevation

Wooden entry doors with white frame and soft blue doors

East Elevation



doors soft blue with white frame

North Elevation

Lower duck feeding area

Wire mesh to open area

Lower area for keeping landscape equipment, mechanical equipment, heat pumps external furniture and general storage

- REVISIONS
22/4/2011
- (a) Move disabled toilet to entry corridor and reshape ladies and gents W.C's
 - (b) Enhance escape route into walking area for kitchen
 - (c) Entry doors relocated from side to end of building
 - (d) Remove blue gables
 - (e) New windows to end of classroom and dining area
 - (f) Lighten building for extra toilets, classroom and provide cleaners sink and stores
 - (g) Internal sliding doors extended
 - (h) Reshape entrance
 - (i) Building moved to East of plot to retain open landscape view when approaching from road and visual separation from lighthouse
 - (j) Adjust main floor level of building after projected flooding information
 - (k) Walkway altered for new building position
 - (l) Enclose lower area
 - (m) Steps added outside kitchen and emergency escape ramp to east end with raised soil bund to slope



Sir Peter Scott Centenary Centre
East Bank Lighthouse, Sutton Bridge
Elevations
Drawing 2/lh/11
SCALE 1:100
22/4/2011